



28 MARCH TO 27 APRIL

# MEGA CREATURES

## EVENT PROGRAM

**DAY SESSION:** FROM 28 MARCH TO 27 APRIL 2026. 9AM-4PM

**NIGHT SAFARI WEEKENDS AND SCHOOL HOLIDAYS:**

28-29 MARCH, 3-19 APRIL AND 24-26 APRIL. 5PM-9:30PM

# MEGA CREATURES



## Mega Creatures Day Session

Enter a captivating realm where fantasy comes to life, now expanded with breathtaking new creature installations. Marvel at powerful dragons perched atop crumbling castle ruins, expanding the Land of Legends, while graceful unicorns invite you to pause and relax on whimsical toadstool seats, and towering dinosaurs take over the landscape.

Alongside returning favourites, such as prehistoric giants and colossal insects, the Gardens are transformed into an immersive world blending ancient prehistory with myth and magic. With thrilling amusement rides\* and plenty more to explore and discover, Mega Creatures is an unforgettable experience for curious minds and adventurous spirits of all ages.

Open 9am – 4pm (last entry 3pm)

Rides from 10am – 3:30pm.

Ticket Booth from 10am – 3pm.

Last ride 3:15pm.

## Mega Creatures Night Safari

As evening falls, Mega Creatures Night Safari awakens, inviting you to explore the Gardens in a whole new light, following pathways into a spellbinding after-dark world where colossal dinosaurs loom, mighty dragons guard ancient ruins, and magical unicorns shimmer beneath the night sky. Every turn reveals a new surprise waiting to be discovered.

With illuminated creature displays, a rich fantasy atmosphere and thrilling amusement rides\* adding to the excitement, the Night Safari transforms Mega Creatures into a truly unforgettable twilight adventure. It's a magical evening experience designed to spark imagination, thrill young explorers, and leave families wide-eyed with wonder long after the night ends.

Open 5pm – 9:30pm (last entry 8:30pm)

Rides from 5:30pm – 9pm.

Ticket Booth from 5:30pm – 8:30pm.

Last ride 8:45pm.



**ALL GUESTS MUST EXIT THE GARDENS BY 4PM, GATES RE-OPEN AT 5PM FOR MEGA CREATURES NIGHT SAFARI.**

HUNTER VALLEY GARDENS RESERVES THE RIGHT TO ADJUST OPERATING HOURS WITHOUT PRIOR NOTICE.

TICKETS FOR MEGA CREATURES DAY SESSION AND MEGA CREATURES NIGHT SAFARI CAN BE PURCHASED SEPARATELY. FOR GUESTS WISHING TO ATTEND BOTH EVENTS COMBO DAY/NIGHT TICKETS ARE AVAILABLE. TICKETS ARE VALID FOR NOMINATED SESSION ONLY.

# MEGA CREATURES

Hoppity Hollow Hunt

EMERGENCY ASSEMBLY POINT

FIRST AID

RIDE TICKETS

Food Stalls

Herbivore Hectares

Spider Den

Bug Hunt

Dragon Floresta

Carnivore Concourse

Unicorn Meadow

Carnivore Concourse

Dinosaur Diggings

Butterfly Ballet

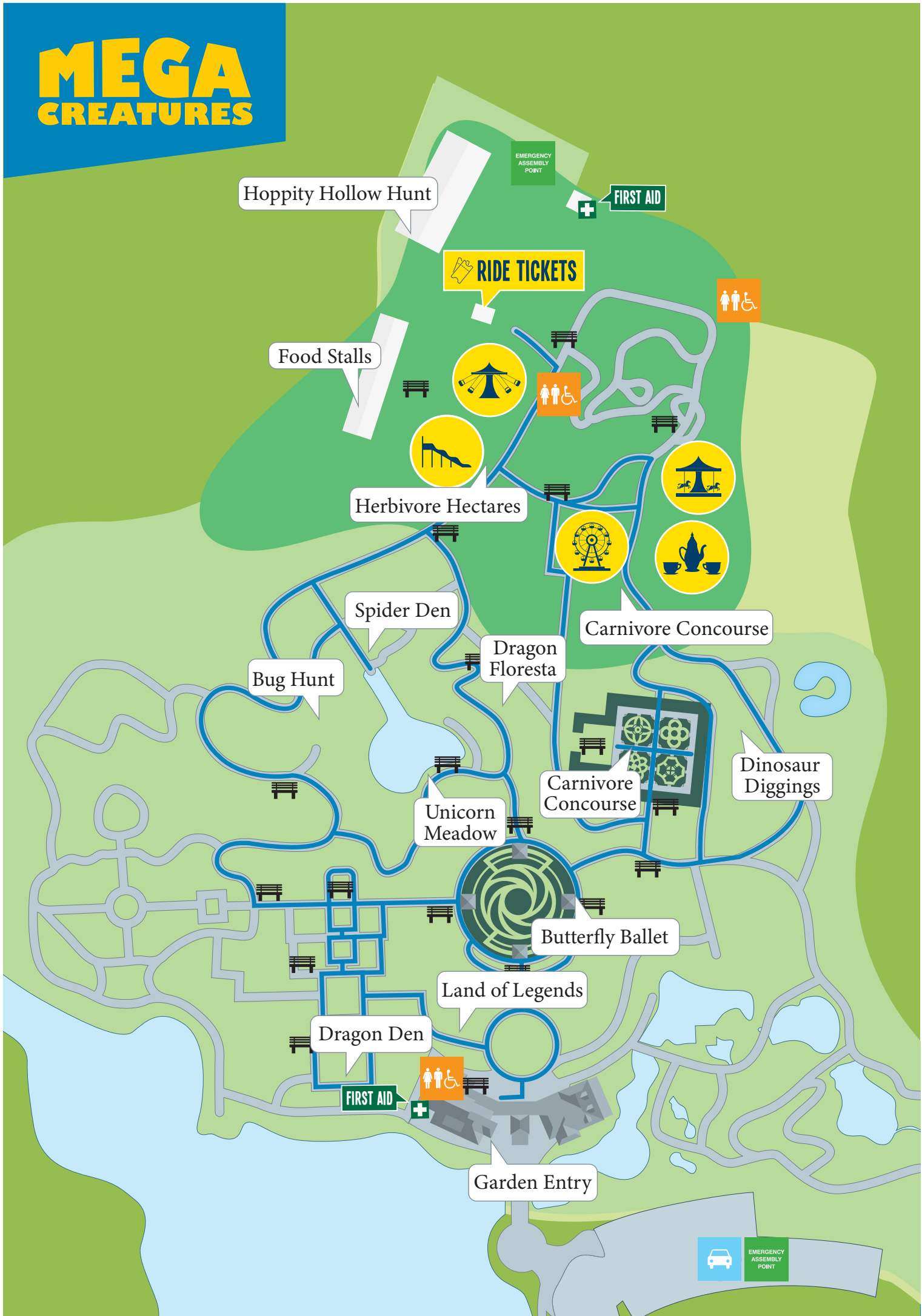
Land of Legends

Dragon Den

FIRST AID

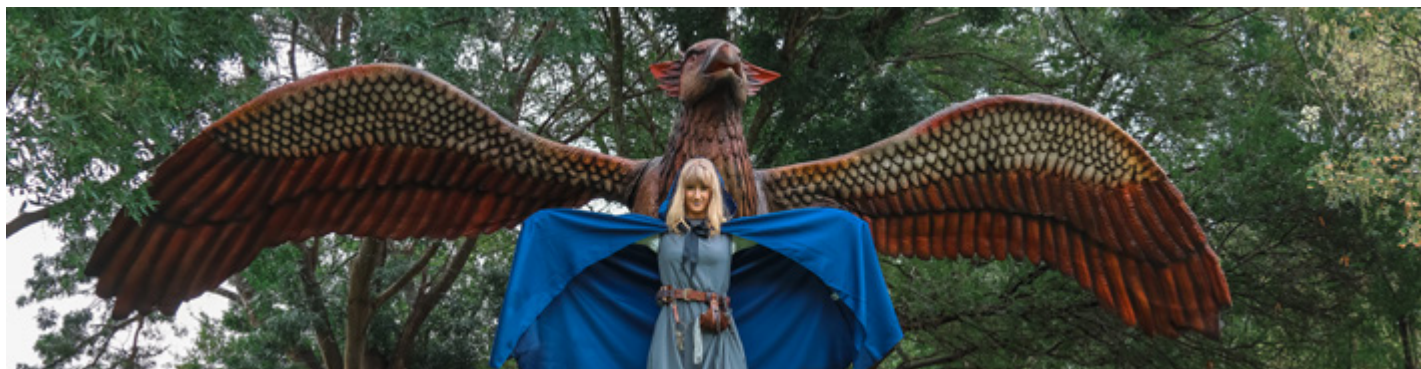
Garden Entry

EMERGENCY ASSEMBLY POINT



# MEGA CREATURES

## Entertainment



### Daily Creature Egg Hunt

Can you find the missing creature egg? Lost in our Gardens is one large egg. Find the egg and return it to Mumma in Garden Entry to win a family pass to Spring School Holidays in the Gardens!



### Bug Hunt Adventure

Embark on an exciting stamp hunt through the side of the waterfall in Sunken Garden. Solve clever riddles and collect stamps along the way as you explore these areas. Grab your stamp sheet at entry and let the hunt begin!



### Dragon's Quest

Step into a thrilling display of courage and legend as families gather to watch our brave knight face off against a fearsome flight of dragons. Set within the Formal Garden, Dragon's Quest brings medieval adventure to life with action, live storytelling and plenty of excitement to capture young imaginations. Kids will love cheering on the knight as she battles to protect the realm, making this a must-see experience for little adventurers who dream of castles, dragons and heroic quests.

# MEGA CREATURES

## Entertainment



SATURDAYS ONLY

### Dinosaur Diggings

Calling all young explorers and future palaeontologists. Dinosaur Diggings gives kids the chance to roll up their sleeves and dig for real fossils under the guidance of our Mega Creatures Explorer. Set near the Brumbies and Frog Ponds, this hands-on activity brings prehistoric history to life as children uncover ancient treasures. It's an exciting experience that turns curiosity into discovery.



DAY SESSION ONLY

### Magical Unicorn Meetings

Step into a storybook moment with our Magical Unicorn Meetings, where fantasy becomes reality in the enchanting Sunken Garden. Families can meet a graceful unicorn up close, take photos, and enjoy a gentle, magical encounter that will leave little ones wide-eyed with wonder. Perfect for younger children and unicorn enthusiasts of all ages, this serene and charming experience provides a beautiful pause amidst a day filled with adventure.



DAY SESSION ONLY

### Fairy Face Painting

Add an extra touch of magic to your visit with Fairy Face Painting, hosted by our resident fairy among whimsical toadstools in the Sunken Garden. Children can transform into their favourite magical characters, from fairies and creatures to colourful fantasy designs, creating a keepsake they'll remember long after the day ends. It's a joyful, creative experience that adds sparkle to family photos and makes every child feel part of the magical world of Mega Creatures.



NIGHT SAFARI ONLY

### Potion Play with the Wizard

As dusk settles over the Gardens, children are invited into the magical world of a mysterious wizard and her bubbling wonder-lab. Potion Play is an enchanting, interactive experience where curious minds can learn the secrets behind colourful brews, smoky potions and magical mixtures. Set in the Amphitheatre, this playful experience blends fantasy and fun, sparking imagination and delighting families looking for something a little magical after dark.

# MEGA CREATURES

## Entertainment Schedule

Activity	Dates	Times
Daily Creature Egg Hunt	28 March–27 April	From 9am to 4pm until found
Bug Hunt Adventure	28 March–27 April	All day through the side of the waterfall in Sunken Garden
Dragon's Quest	28-29 March, 3-19 April & 24-27 April	At 12pm and 2pm in the Formal Garden
Potion Play with the Wizard	28-29 March, 3-19 April & 24-26 April	At 6pm and 7:30pm in the Amphitheatre
Dinosaur Diggings	28 March–27 April	Saturdays only at 11am in the Brumbies and Frog Ponds areas
Magical Unicorn Meetings	4-5, 11-12, 18-19 April	At 10am to 2pm   in the Sunken Garden
Fairy Face Painting	3-19 April	From 10am to 2pm in the Sunken Garden

# MEGA CREATURES

## Food Stalls

Delight in a variety of delicious food and beverage options available throughout the event.

Day Session from 9:30am - 3:30pm. Garden Terrace Café from 9:30am - 3:30pm. Night Safari from 5:30pm - 8:30pm.



### HVG Trailer

- Selection of Loaded Fries
- Selection of Burgers
- Kids meals - Hamburger & Chips, Chicken Nuggets & Chips, Fish & Chips
- Assorted Soft Drinks & Water
- Sports Drinks, Kids' Poppers, Coffee & Bottled Water

### Garden Terrace Café

**Open daily from 9:30am - 3:30pm.**

- Seating both inside or outside on the deck overlooking the Oriental Garden
- Café Menu
- Selection of Hot & Cold Drinks
- Ice Creams

### Gelato Bros

- Woodfired Pizza
- Desserts

### During Easter Long Weekend:

#### Veronton Dumplings

- Dumplings

#### German Grill Haus

- Hotdogs
- Pretzels
- Kransky

#### Hawaiian Slushies

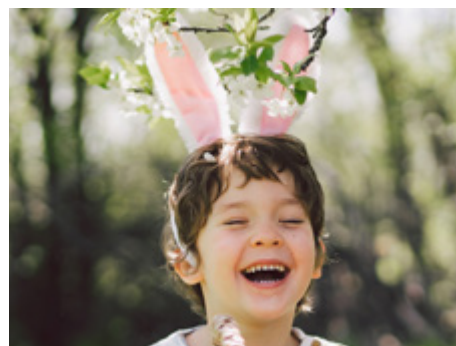
- Slushies

# MEGA CREATURES

## Special Easter Activities

Friday 3 April – Monday 6 April 2026

Join us for a long weekend of fun, including Easter activities and our amazing rides\*. Every child will receive an Easter chocolate after the Hoppity Hollow Hunt\*.



### Meet the Easter Bunny

Special guest appearances from the Easter Bunny outside Hoppity Hollow at the events area.

Friday 3 April	10:30am 1:15pm
Saturday 4 April	10:30am
Sunday 5 April	12:15pm 1:15pm
Monday 6 April	10:30am 12:15pm



### Hoppity Hollow Hunt

Tickets are \$2 per child when purchased as an add-on to your Mega Creatures Day session tickets.

Children with pre-purchased hunt tickets\* can participate in the Hoppity Hollow Hunt from 9:30am to 3pm during the Easter long weekend and search for nominated eggs with the numbers 1,2 and 3. Once the child finds one of each number, they can present them to our staff at the end of the path to claim their Easter chocolate.

\*Hoppity Hollow Hunt is available on a single session per day from 9:30am to 3pm during the Easter long weekend. Tickets are \$2 per hunt session per child. Tickets can be pre-purchased online as an add-on to your Mega Creatures Day session tickets, or you can present a ride ticket at the Event Marquee. Children with tickets can present to the Event Marquee for the Hunt at any time during the Hunt session. Admission charges apply. Hunter Valley Gardens recommends guests purchase tickets on our website prior to arrival. Tickets (except Group tickets) are available through our website or at the Gardens entry. Fraudulent tickets will not be honoured. Mega Creatures and Mega Creatures Night Safari activities are open during event hours only. Program subject to change. Terms and conditions of entry apply. \*Rides are user pay; height and age restrictions apply. Some activities may not open in adverse weather conditions and unscheduled maintenance. Entry to the Gardens closes one hour before the completion of the session. Access to the entire Garden is available during the day session only; some areas are closed during Mega Creatures Night Safari for the safety of our guests. Individuales tickets required for each session, or purchase a day/night combo ticket to experience the best of both worlds. Tickets not valid for the date of arrival may be refused entry.

# MEGA CREATURES

## Amusement Rides

**\$6 per ride, or a Bonus Ride Pack for \$30**

**Mega Creatures** day session. Rides from 10am – 3:30pm. Ride Ticket Booth from 10am – 3pm. Last ride at 3:15pm.

**Mega Creatures Night Safari.** Rides from 5:30pm – 9pm. Ride Ticket Booth from 5:30pm – 8:30pm. Last ride 8:45pm.



### Superslide

*1x ticket per person per 2 rides.* Children between 110cm-120cm must ride with an adult (16+), 120cm and above may ride alone. A supervising adult (16+) does not require a ticket to ride with child.



### Swing Chair

*1x ticket per person per ride.* Children between 110cm-120cm must ride with an adult (16+), 120cm and above may ride alone.



### Tea Cups

*1x ticket per person per ride.* Children between 95cm-120cm must ride with an adult (16+), 120cm and above may ride alone.



### Ferris Wheel

*1x ticket per person per ride.* Children below 120cm must ride with an adult.



### Carousel

*1x ticket per person per ride.* For children only. Children below 105cm must ride with an adult (16+). A supervising adult (16+) does not require a ticket to stand next to the child.

#### Closures

Rides may close for unscheduled maintenance and weather events. I.e., lightning within a 30km radius, heavy rain, gale force winds or severe weather.

#### Height Restrictions

Ride operators will confirm height of guests prior to ride entry – guests who do not meet height requirements will be not permitted on the ride.

**Please be polite and respectful to staff at all times.**

Failure to adhere to the above may lead to expulsion from the event.

# MEGA CREATURES

## Visitor Parking

Hunter Valley Gardens has free onsite parking.



We kindly ask guests to not enter the Gardens with any of the following:



NO PETS



NO DRONES



NO FOOD  
NO DRINKS\*



NO BIKES



NO SCOOTERS



NO ESKIES



NO SMOKING  
OR VAPING

\*Sealed water excepted.